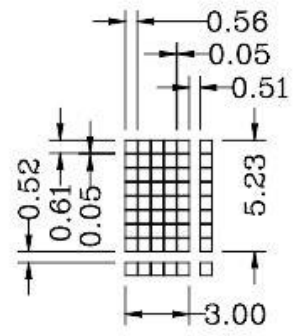
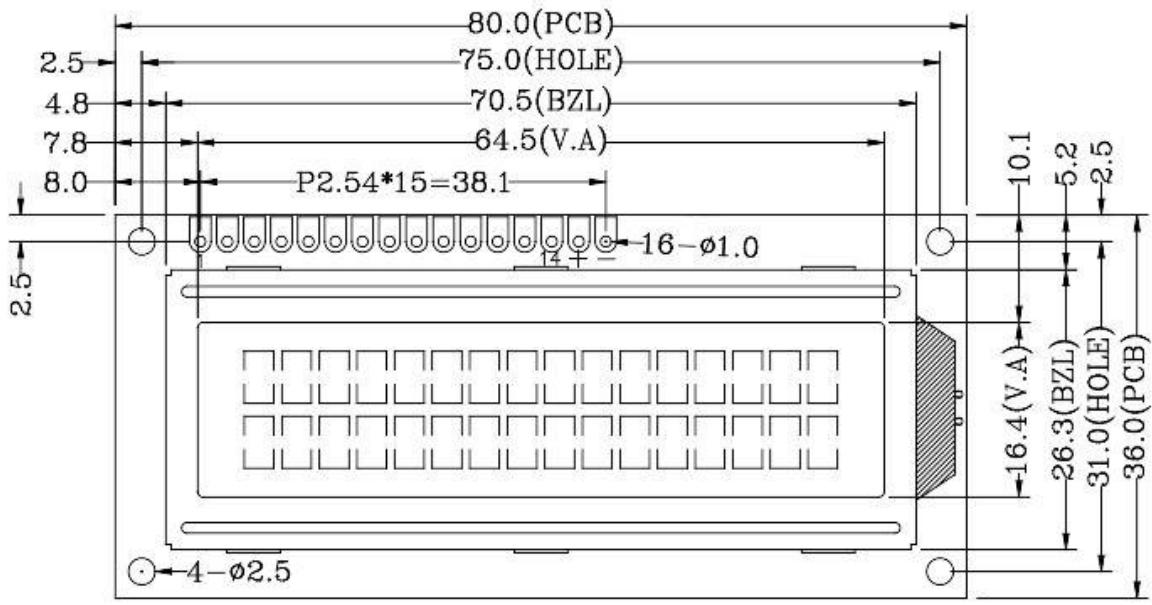
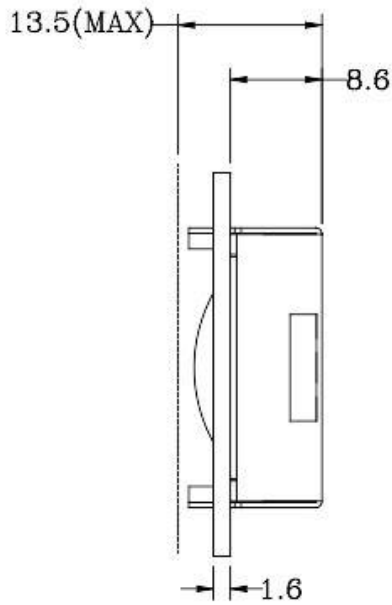
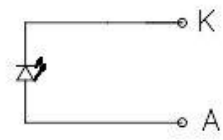


REV	ECN NO.	NATURE OF MODIFICATION	CN/DATE
△			
△			
△			



PIN NO	SYMBOL
-	LED-(0V)
+	LED+(+5.0V)
14	DB7
13	DB6
12	DB5
11	DB4
10	DB3
9	DB2
8	DB1
7	DB0
6	E
5	R/W
4	RS
3	VO(NC)
2	VDD
1	VSS



ITEM	PARAMETERS	ITEM	PARAMETERS
OPERATING VOLTAGE	5.0V	OPERATING TEMP	-30? TO 80?
OPERATING CURRENT	--	STORAGE TEMP	-30? TO 85?
LCD DRIVE VOLTAGE	4.5V(Non-adjustable)	POLARIZER TYPE	FRONT: TRANSMISSIVE
DISPLAY MODE	STN(Y/G)/POSITIVE/TRANSFLECTIVE	BACKLIGHT	BACK: TRANSFLECTIVE
LCD DRIVE METHOD	1/16 DUTY,1/5BIAS	ROHS STANDARD	YELLOW/GREEN, VF=3.0V IF=15mA
LCD DRIVE IC	ST7066U-0B	OTHER	YES ■
VIEW DIRECTION	6:00		--

UNIT	TOLERANCE
MM	X.X = ±0.3
3RD ANGLE	X.XX = ±0.3
ANG	ANG = -

AZ DISPLAY	
SCALE: 1:1	TITLE: LCM
DRAWN: Jacky Li	MODEL NO: ACM1602KW-FL-YBE-XBE REV A
CHECKED:	PART NO: --
APPROVED:	SH NO1/1

1 2 3 4 5 6 7 8