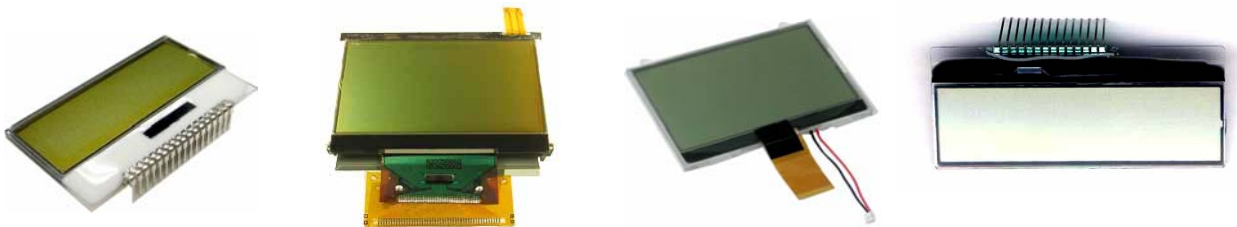


TECHNICAL BRIEF

BY: AZD ENGINEERING

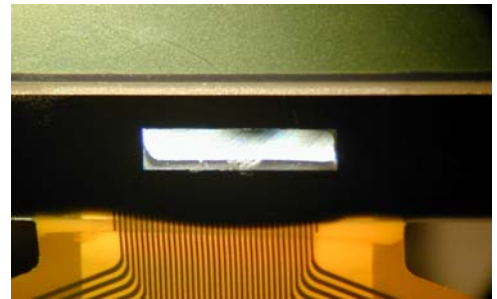
Compact/Space-Saving LCDs

With the ongoing development of many small and miniature-sized applications in the electronics industry, AZ Displays carries a wide range of low profile and compact LCDs to meet the growing popularity. We are proud to offer a standard and custom line of COG (Chip-on-glass) and TAB (Tape Automated Bonding or a.k.a. Chip-on-flex) displays with a variety of backlight solutions such as EL and LED.



COG Displays

Chip-on-glass modules are available in character and graphic formats. They feature high contrast STN and FSTN technology and are compatible with Hot Bar, ZIF & Through Hole connections, allowing maximum flexibility in the assembly process. In order to achieve a low profile size, the COG production process includes gold bumped driver IC's that are bonded directly to the glass edge eliminating the need for any additional PCB, bezel and connector.



TAB Displays

Similar to its COG counterpart, TAB modules are also available in character and graphic formats. The unique difference from COG to TAB modules is the location of the IC. In addition, the TAB modules contain gold bumped driver IC's that are directly bonded on the FPC instead of the glass. With the location of the IC on the flex connector, the entire display module will have a smaller package size and low profile. There will be no need for any additional components such as the PCB, bezel and connector.

